



BioBright

the smart laboratory of the future
MIT Media Lab & Harvard Medical School, MS '14


\$50bn

\$50bn

“I spend around 2 weeks collecting the data I need to make a 2 minute calculation and decision”

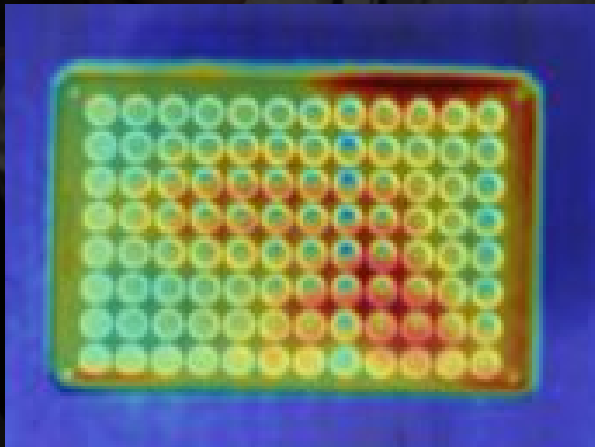
- Head of Research Group
top 10 Pharmaceutical company





“Darwin, **take a note** that **sample 3** is more viscous than usual”

Equipment Data





BioBright

Automatic data
synchronization

Metadata
extraction

Voice assistant



BioBright

Automatic data
synchronization

Metadata
extraction

Voice assistant

Save Current Search

Favorite Searches

IR Photos
Last Week's MetaXpress
Western Blot Notes

Common Searches

Today
Yesterday
Last Week
Last Month

CSV
MetaXpress
Images
Text
Video



show me filetype: MetaXpress for hepatotoxicity that have exposure: 7ms



Date Created	Filetype	Filename	Experiment	Protocol
Jul 19 2016	TIFF	092bs7nte5aab.tiff	RaymondLAB-076b	Hepatotoxicity Assay 1G
Jul 20 2016	TIFF	092bs7nte5aca.tiff	RaymondLAB-076b	Hepatotoxicity Assay 1G
Notes:		Experiment base name: ES-12-1-2	Clear Count: 1	
DAY 4 PEETRI 2.0 (+C)		Experiment set: ES-12	Clear Mode: CLEAR PRE SEQUENCE	
T40 POST BLEACH		Column: Cmpd	Frames to Average: 1	
11 - CY.A		Exposure: 7 ms	Trigger Mode: Normal (TIMED)	
12 - Ca		Binning: 2 x 2	Temperature: -3.8	
13 - C55		Region: 1392 x 1040 offset at (0 0)	LAF Performed: 1	
14 - Chl		Subtract: Off	LAF Plate Bottom Attempts: 1	
15 - R		Shading: Off	LAF Plate Bottom Success: 1	
16 - 7		Digitizer: 20 MHz	LAF Plate Bottom Exposure Attempts: 1	
17 - CY		Gain: Gain 2 (4x)	LAF Plate Bottom Exposure: 3	
18 - Q		Camera Shutter: Open for Expose	LAF Plate Bottom Position: 10835	
Acquired from Photometrics			LAF Well Bottom Attempts: 0	

“The BioBright system augments a single researcher to do the work of two with more than 20 times greater accuracy”

- Bijan Pesaran, Professor

NYU

“Best of all, people enjoy using the system. What used to be a **tedious burden** is becoming an **opportunity for discovery.**”

- Bijan Pesaran, Professor

NYU



BioBright

the smart laboratory of the future

charles@biobright.com